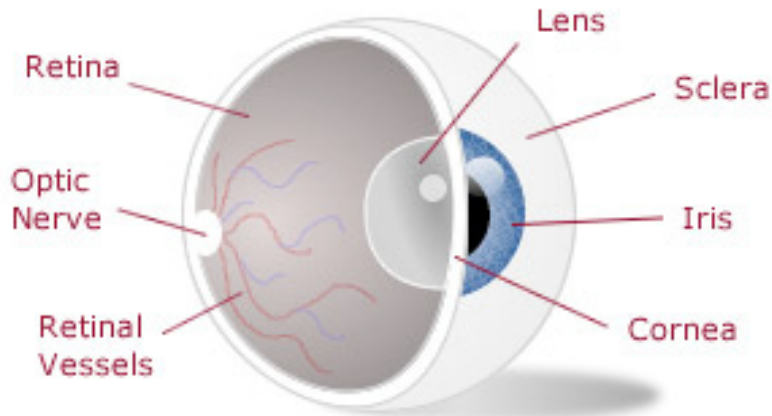


VCAC



VISION CONDITION ACTION CHART



DEPARTMENT OF MOTOR VEHICLES
Administrative Services Division
Departmental Training Branch
08/2014



<i>Condition</i>	<i>Definition</i>	<i>Stability and Functional Impairments</i>
ALBINISM	Congenital absence of pigment within the eye. Associated with poor acuity, light sensitivity, and nystagmus.	This condition is STABLE (static) . Impaired functions may be: <ul style="list-style-type: none"> • Decreased Acuity • Problems with Glare • Abnormal Eye Movements
<i>Action Needed</i>	<i>If...</i>	<i>Then...</i>
No Action	<ul style="list-style-type: none"> • The vision screening standard is met, or • The vision condition was previously identified and the department has a record of it. 	N/A
SDPE	<ul style="list-style-type: none"> • The vision screening standard is not met, or • The department does not have a record of it 	<ul style="list-style-type: none"> • Require a DL 62. • If the SDPE is passed: <ul style="list-style-type: none"> — Issue a license. — Impose any appropriate restrictions. • If the SDPE is failed, determine if: <ul style="list-style-type: none"> — The customer may improve with more training or practice. — An ADPE may be appropriate (see ADPE below). — The customer’s driving errors are so serious that revocation is necessary (see Immediate Revocation below).
ADPE	The customer failed the SDPE, and the: <ul style="list-style-type: none"> • Driving environment in which he/she needs to drive is less demanding than the driving test route at the DMV field office, • He/she consents to specific area restrictions 	<ul style="list-style-type: none"> • If the ADPE is passed: <ul style="list-style-type: none"> — Issue a DL — Impose any appropriate restrictions that reduce the customer’s scope of driving. <p>NOTE: Issuing a limited-term DL may be appropriate if there are valid concerns over the customer’s physical condition, judgment, and/or reactions.</p> • If the ADPE is failed, or the driving errors are so serious that revocation is necessary: <ul style="list-style-type: none"> — Revoke the customer’s DL (see Immediate revocation below).
Immediate Revocation	The customer: <ul style="list-style-type: none"> • Fails the SDPE and the ADPE is not an option • Fails the ADPE • Makes driving errors that are so serious that issuing a DL would endanger the motoring public 	<ul style="list-style-type: none"> • Issue an Order of Suspension/Revocation (DS 439 FO), under the authority of VC §13953, before the customer leaves the office or the examiner leaves the customer’s residence. • Fax a copy of the DS 439 FO to the local Driver Safety office immediately, or after returning to the office from an ADPE to update the driving record.

<i>Condition</i>	<i>Definition</i>	<i>Stability and Functional Impairments</i>
AMBLYOPIA (Lazy Eye)	A reduction in the acuteness of vision without apparent eye disease. This condition cannot be entirely corrected by lenses.	This condition generally affects only one eye and is STABLE (static) . Impaired functions may be: <ul style="list-style-type: none"> • Central Vision/Visual Acuity • Night Vision • Judgment of Distance • Peripheral Vision
<i>Action Needed</i>	<i>If...</i>	<i>Then...</i>
No Action	<ul style="list-style-type: none"> • The vision screening standard is met, or • The vision condition was previously identified and the department has a record of it. 	N/A
SDPE	<ul style="list-style-type: none"> • The vision screening standard is not met, or • The department does not have a record of it 	<ul style="list-style-type: none"> • Require a DL 62. • If the SDPE is passed: <ul style="list-style-type: none"> — Issue a license. — Impose any appropriate restrictions. <p>NOTE: Issue a limited-term DL if the customer’s visual acuity in each eye is 20/100 or worse.</p> • If the SDPE is failed, determine if: <ul style="list-style-type: none"> — The customer may improve with more training or practice. — An ADPE may be appropriate (see ADPE below). — The customer’s driving errors are so serious that revocation is necessary (see Immediate Revocation below).
ADPE	<p>The customer failed the SDPE, and the:</p> <ul style="list-style-type: none"> • Driving environment in which he/she needs to drive is less demanding than the driving test route at the DMV field office, • He/she consents to specific area restrictions 	<ul style="list-style-type: none"> • If the ADPE is passed: <ul style="list-style-type: none"> — Issue a DL — Impose appropriate restrictions that reduce the customer’s scope of driving. <p>NOTE: Issuing a limited-term DL may be appropriate if there are valid concerns over the customer’s physical condition, judgment, and/or reactions.</p> • If the ADPE is failed, or the driving errors are so serious that revocation is necessary: <ul style="list-style-type: none"> — Revoke the customer’s DL (see Immediate revocation below).
Immediate Revocation	<p>The customer:</p> <ul style="list-style-type: none"> • Fails the SDPE and the ADPE is not an option • Fails the ADPE • Makes driving errors that are so serious that issuing a DL would endanger the motoring public 	<ul style="list-style-type: none"> • Issue an Order of Suspension/Revocation (DS 439 FO), under the authority of VC §13953, before the customer leaves the office or the examiner leaves the customer’s residence. • Fax a copy of the DS 439 FO to the local Driver Safety office immediately, or after returning to the office from an ADPE to update the driving record.

<i>Condition</i>	<i>Definition</i>	<i>Stability and Functional Impairments</i>
APHAKIA	Absence of the crystalline lens of the eye; usually the result of cataract removal surgery.	This condition generally affects only one eye and is STABLE (static) . Impaired functions may be: <ul style="list-style-type: none"> • Central Vision/Visual Acuity • Glare Resistance/Glare Recovery • Judgment of Distance • Peripheral Vision • Eye Movements
<i>Action Needed</i>	<i>If...</i>	<i>Then...</i>
No Action	<ul style="list-style-type: none"> • The vision screening standard is met, or • The vision condition was previously identified and the department has a record of it. 	N/A
SDPE	<ul style="list-style-type: none"> • The vision screening standard is not met, or • The department does not have a record of it 	<ul style="list-style-type: none"> • Require a DL 62. • If the SDPE is passed: <ul style="list-style-type: none"> — Issue a license. — Impose any appropriate restrictions. <p>NOTE: Issue a limited-term DL if the customer’s visual acuity is worse than 20/40 in one eye, and there is progressive vision impairment in the other eye.</p> <ul style="list-style-type: none"> • If the SDPE is failed, determine if: <ul style="list-style-type: none"> — The customer may improve with more training or practice. — An ADPE may be appropriate (see ADPE below). — The customer’s driving errors are so serious that revocation is necessary (see Immediate Revocation below).
ADPE	The customer failed the SDPE, and the: <ul style="list-style-type: none"> • Driving environment in which he/she needs to drive is less demanding than the driving test route at the DMV field office, • He/she consents to specific area restrictions 	<ul style="list-style-type: none"> • If the ADPE is passed: <ul style="list-style-type: none"> — Issue a DL — Impose any appropriate restrictions that reduce the customer’s scope of driving. <p>NOTE: Issuing a limited-term DL may be appropriate if there are valid concerns over the customer’s physical condition, judgment, and/or reactions.</p> <ul style="list-style-type: none"> • If the ADPE is failed, or the driving errors are so serious that revocation is necessary: <ul style="list-style-type: none"> — Revoke the customer’s DL (see Immediate revocation below).
Immediate Revocation	The customer: <ul style="list-style-type: none"> • Fails the SDPE and the ADPE is not an option • Fails the ADPE • Makes driving errors that are so serious that issuing a DL would endanger the motoring public 	<ul style="list-style-type: none"> • Issue an Order of Suspension/Revocation (DS 439 FO), under the authority of VC §13953, before the customer leaves the office or the examiner leaves the customer’s residence. • Fax a copy of the DS 439 FO to the local Driver Safety office immediately, or after returning to the office from an ADPE to update the driving record.

<i>Condition</i>	<i>Definition</i>	<i>Stability and Functional Impairments</i>
ASTIGMATISM Also see Keratoconus	A condition in which the visual image is poorly focused. Generally correctable by lenses.	This condition is PROGRESSIVE . Impaired functions may be: <ul style="list-style-type: none"> • Central Vision/Visual Acuity • Glare Resistance/Glare Recovery
<i>Action Needed</i>	<i>If...</i>	<i>Then...</i>
No Action	<ul style="list-style-type: none"> • The vision screening standard is met. 	N/A
SDPE	<ul style="list-style-type: none"> • The vision screening standard is not met. 	<ul style="list-style-type: none"> • Require a DL 62. • If the SDPE is passed: <ul style="list-style-type: none"> — Issue a limited-term DL. — Consult the prognosis section of the DL 62 to determine when the customer should return to DMV. — Impose any appropriate restrictions. • If the SDPE is failed, determine if: <ul style="list-style-type: none"> — The customer may improve with more training or practice. — An ADPE may be appropriate (see ADPE below). — The customer’s driving errors are so serious that revocation is necessary (see Immediate Revocation below).
ADPE	<p>The customer failed the SDPE, and the:</p> <ul style="list-style-type: none"> • Driving environment in which he/she needs to drive is less demanding than the driving test route at the DMV field office, • He/she consents to specific area restrictions 	<ul style="list-style-type: none"> • If the ADPE is passed: <ul style="list-style-type: none"> — Issue a limited-term license DL — Impose any appropriate restrictions that reduce the customer’s scope of driving. • If the ADPE is failed, or the driving errors are so serious that revocation is necessary: <ul style="list-style-type: none"> — Revoke the customer’s DL (see Immediate revocation below).
Immediate Revocation	<p>The customer:</p> <ul style="list-style-type: none"> • Fails the SDPE and the ADPE is not an option • Fails the ADPE • Makes driving errors that are so serious that issuing a DL would endanger the motoring public 	<ul style="list-style-type: none"> • Issue an Order of Suspension/Revocation (DS 439 FO), under the authority of VC §13953, before the customer leaves the office or the examiner leaves the customer’s residence. • Fax a copy of the DS 439 FO to the local Driver Safety office immediately, or after returning to the office from an ADPE to update the driving record.

<i>Condition</i>	<i>Definition</i>	<i>Stability and Functional Impairments</i>
CATARACT	Opacity or clouding of the crystalline lens. Usually correctable by surgery. May be associated with a diabetic condition or other metabolic diseases. May also be caused by age, eye injury, or heredity.	This condition is PROGRESSIVE . Impaired functions may be: <ul style="list-style-type: none"> • Central Vision/Visual Acuity • Night Vision • Glare Resistance/Glare Recovery • Judgment of Distance • Peripheral Vision
<i>Action Needed</i>	<i>If...</i>	<i>Then...</i>
No Action	<ul style="list-style-type: none"> • The vision screening standard is met. <p>NOTE: Take no action if the vision screening standard is met and the customer does not have any other vision condition that requires a drive test.</p>	N/A
SDPE	<ul style="list-style-type: none"> • The vision screening standard is not met. 	<ul style="list-style-type: none"> • Require a DL 62. • If the SDPE is passed: <ul style="list-style-type: none"> — Issue a limited-term DL. — Consult the prognosis section of the DL 62 to determine when the customer should return to DMV. — Impose any appropriate restrictions. • If the SDPE is failed, determine if: <ul style="list-style-type: none"> — The customer may improve with more training or practice. — An ADPE may be appropriate (see ADPE below). — The customer’s driving errors are so serious that revocation is necessary (see Immediate revocation below).
ADPE	<p>The customer failed the SDPE, and the:</p> <ul style="list-style-type: none"> • Driving environment in which he/she needs to drive is less demanding than the driving test route at the DMV field office, • He/she consents to specific area restrictions 	<ul style="list-style-type: none"> • If the ADPE is passed: <ul style="list-style-type: none"> — Issue a limited-term license DL — Impose any appropriate restrictions that reduce the customer’s scope of driving. • If the ADPE is failed, or the driving errors are so serious that revocation is necessary: <ul style="list-style-type: none"> — Revoke the customer’s DL (see Immediate revocation below).
Immediate Revocation	<p>The customer:</p> <ul style="list-style-type: none"> • Fails the SDPE and the ADPE is not an option • Fails the ADPE • Makes driving errors that are so serious that issuing a DL would endanger the motoring public. 	<ul style="list-style-type: none"> • Issue an Order of Suspension/Revocation (DS 439 FO), under the authority of VC §13953, before the customer leaves the office or the examiner leaves the customer’s residence. • Fax a copy of the DS 439 FO to the local Driver Safety office immediately, or after returning to the office from an ADPE to update the driving record.

<i>Condition</i>	<i>Definition</i>	<i>Stability and Functional Impairments</i>
CONGENITAL NYSTAGMUS	Involuntary repetitive eye movements that are present from birth. NOTE: Nystagmus may be acquired after birth and then would be associated with other medical conditions.	This condition is GENERALLY STABLE (static) . Impaired functions may be: <ul style="list-style-type: none"> • Decrease Acuity • Abnormal Eye Movements NOTE: Some individuals with this vision condition will turn their head to look at objects.
<i>Action Needed</i>	<i>If...</i>	<i>Then...</i>
No Action	<ul style="list-style-type: none"> • The vision screening standard is met, or • The vision condition was previously identified and the department has a record of it. 	N/A
SDPE	<ul style="list-style-type: none"> • The vision screening standard is not met, or • The department does not have a record of it 	<ul style="list-style-type: none"> • Require a DL 62. • If the SDPE is passed: <ul style="list-style-type: none"> — Issue a license. — Impose any appropriate restrictions. • If the SDPE is failed, determine if: <ul style="list-style-type: none"> — The customer may improve with more training or practice. — An ADPE may be appropriate (see ADPE below). — The customer’s driving errors are so serious that revocation is necessary (see Immediate Revocation below).
ADPE	The customer failed the SDPE, and the: <ul style="list-style-type: none"> • Driving environment in which he/she needs to drive is less demanding than the driving test route at the DMV field office, • He/she consents to specific area restrictions 	<ul style="list-style-type: none"> • If the ADPE is passed: <ul style="list-style-type: none"> — Issue a DL — Impose any appropriate restrictions that reduce the customer’s scope of driving. NOTE: Issuing a limited-term DL may be appropriate if there are valid concerns over the customer’s physical condition, judgment, and/or reactions. • If the ADPE is failed, or the driving errors are so serious that revocation is necessary: <ul style="list-style-type: none"> — Revoke the customer’s DL (see Immediate revocation below).
Immediate Revocation	The customer: <ul style="list-style-type: none"> • Fails the SDPE and the ADPE is not an option • Fails the ADPE • Makes driving errors that are so serious that issuing a DL would endanger the motoring public. 	<ul style="list-style-type: none"> • Issue an Order of Suspension/Revocation (DS 439 FO), under the authority of VC §13953, before the customer leaves the office or the examiner leaves the customer’s residence. • Fax a copy of the DS 439 FO to the local Driver Safety office immediately, or after returning to the office from an ADPE to update the driving record.

<i>Condition</i>	<i>Definition</i>	<i>Stability and Functional Impairments</i>
CORNEAL OPACITY	<p>The cornea is normally clear; however, it can become cloudy or opacified due to the presence of scar tissue, an injury, or infection. Scar tissue:</p> <ul style="list-style-type: none"> • Prevents light from passing through the cornea resulting in vision loss. • Can be removed surgically or by the use of a laser. <p>When scar tissue or opacification extends deeper into the corneal tissue, a corneal transplant may be necessary.</p>	<p>This condition is POTENTIALLY PROGRESSIVE.</p> <p>Impaired functions may be:</p> <ul style="list-style-type: none"> • Central Vision/Visual Acuity • Night Vision • Glare Resistance/Glare Recovery • Judgment of Distance • Peripheral Vision <p>NOTE: Corneal opacity impairs vision functions much like a cataract.</p>
<i>Action Needed</i>	<i>If...</i>	<i>Then...</i>
No Action	<ul style="list-style-type: none"> • The vision screening standard is met. <p>NOTE: Take no action if the vision screening standard is met and the customer does not have any other vision condition that requires a drive test.</p>	N/A
SDPE	<ul style="list-style-type: none"> • The vision screening standard is not met. 	<ul style="list-style-type: none"> • Require a DL 62. • If the SDPE is passed: <ul style="list-style-type: none"> — Issue a limited-term DL. — Consult the prognosis section of the DL 62 to determine when the customer should return to DMV. — Impose any appropriate restrictions. • If the SDPE is failed, determine if: <ul style="list-style-type: none"> — The customer may improve with more training or practice. — An ADPE may be appropriate (see ADPE below). — The customer’s driving errors are so serious that revocation is necessary (see Immediate revocation below).
ADPE	<p>The customer failed the SDPE, and the:</p> <ul style="list-style-type: none"> • Driving environment in which he/she needs to drive is less demanding than the driving test route at the DMV field office, • He/she consents to specific area restrictions 	<ul style="list-style-type: none"> • If the ADPE is passed: <ul style="list-style-type: none"> — Issue a limited-term DL — Impose any appropriate restrictions that reduce the customer’s scope of driving. • If the ADPE is failed, or the driving errors are so serious that revocation is necessary: <ul style="list-style-type: none"> — Revoke the customer’s DL (see Immediate revocation below).
Immediate Revocation	<p>The customer:</p> <ul style="list-style-type: none"> • Fails the SDPE and the ADPE is not an option • Fails the ADPE • Makes driving errors that are so serious that issuing a DL would endanger the motoring public 	<ul style="list-style-type: none"> • Issue an Order of Suspension/Revocation (DS 439 FO), under the authority of VC §13953, before the customer leaves the office or the examiner leaves the customer’s residence. • Fax a copy of the DS 439 FO to the local Driver Safety office immediately, or after returning to the office from an ADPE to update the driving record.

<i>Condition</i>	<i>Definition</i>	<i>Stability and Functional Impairments</i>
DECREASED PERIPHERAL VISION (Tunnel Vision)	A reduction or blind spots in the peripheral field of vision.	This condition is PROGRESSIVE . Impaired functions may be: <ul style="list-style-type: none"> • Night Vision • Peripheral Vision NOTE: If the condition is severe, the person will be unable to compensate even with head movements.
<i>Action Needed</i>	<i>If...</i>	<i>Then...</i>
No Action	<ul style="list-style-type: none"> • The vision screening standard is met. NOTE: Take no action if the customer's field of vision is greater than 20° in each eye.	N/A
SDPE	<ul style="list-style-type: none"> • The vision screening standard is not met. NOTE: Require an SDPE if the DL 62 shows that the customer's field of vision is 20° or less in each eye.	<ul style="list-style-type: none"> • Require a DL 62. • If the SDPE is passed: <ul style="list-style-type: none"> — Issue a limited-term DL. — Consult the prognosis section of the DL 62 to determine when the customer should return to DMV. — Impose any appropriate restrictions. • If the SDPE is failed, determine if: <ul style="list-style-type: none"> — The customer may improve with more training or practice. — An ADPE may be appropriate (see ADPE below). — The customer's driving errors are so serious that revocation is necessary (see Immediate revocation below).
ADPE	<p>The customer failed the SDPE, and the:</p> <ul style="list-style-type: none"> • Driving environment in which he/she needs to drive is less demanding than the driving test route at the DMV field office, • He/she consents to specific area restrictions 	<ul style="list-style-type: none"> • If the ADPE is passed: <ul style="list-style-type: none"> — Issue a limited-term DL — Impose any appropriate restrictions that reduce the customer's scope of driving. • If the ADPE is failed, or the driving errors are so serious that revocation is necessary: <ul style="list-style-type: none"> — Revoke the customer's DL (see Immediate revocation below).
Immediate Revocation	<p>The customer:</p> <ul style="list-style-type: none"> • Fails the SDPE and the ADPE is not an option • Fails the ADPE • Makes driving errors that are so serious that issuing a DL would endanger the motoring public 	<ul style="list-style-type: none"> • Issue an Order of Suspension/Revocation (DS 439 FO), under the authority of VC §13953, before the customer leaves the office or the examiner leaves the customer's residence. • Fax a copy of the DS 439 FO to the local Driver Safety office immediately, or after returning to the office from an ADPE to update the driving record.

<i>Condition</i>	<i>Definition</i>	<i>Stability and Functional Impairments</i>
DIABETIC RETINOPATHY	<p>A disorder of the retina resulting from diabetes. This condition damages the receptor cells in the eyes.</p> <p>Retinopathy:</p> <ul style="list-style-type: none"> • Results from blood leaking into the clear fluid (vitreous) inside the eye. • Can cause the retina to detach because of the weight of the blood within the vitreous. 	<p>This condition is PROGRESSIVE.</p> <p>Impaired functions may be:</p> <ul style="list-style-type: none"> • Central Vision/Visual Acuity • Glare Resistance/Glare Recovery • Night Vision • Peripheral Vision
<i>Action Needed</i>	<i>If...</i>	<i>Then...</i>
No Action	<ul style="list-style-type: none"> • The vision screening standard is met. <p>NOTE: Refer the customer to Driver Safety if he/she is newly diagnosed and uses insulin to treat his/her diabetic condition.</p>	N/A
SDPE	<ul style="list-style-type: none"> • The vision screening standard is not met. 	<ul style="list-style-type: none"> • Require a DL 62. • If the SDPE is passed: <ul style="list-style-type: none"> — Issue a limited-term DL. — Consult the prognosis section of the DL 62 to determine when the customer should return to DMV. — Impose any appropriate restrictions. • If the SDPE is failed, determine if: <ul style="list-style-type: none"> — The customer may improve with more training or practice. — An ADPE may be appropriate (see ADPE below). — The customer's driving errors are so serious that revocation is necessary (see Immediate revocation below).
ADPE	<p>The customer failed the SDPE, and the:</p> <ul style="list-style-type: none"> • Driving environment in which he/she needs to drive is less demanding than the driving test route at the DMV field office, • He/she consents to specific area restrictions 	<ul style="list-style-type: none"> • If the ADPE is passed: <ul style="list-style-type: none"> — Issue a limited-term DL — Impose any appropriate restrictions that reduce the customer's scope of driving. • If the ADPE is failed, or the driving errors are so serious that revocation is necessary: <ul style="list-style-type: none"> — Revoke the customer's DL (see Immediate revocation below).
Immediate Revocation	<p>The customer:</p> <ul style="list-style-type: none"> • Fails the SDPE and the ADPE is not an option • Fails the ADPE • Makes driving errors that are so serious that issuing a DL would endanger the motoring public 	<ul style="list-style-type: none"> • Issue an Order of Suspension/Revocation (DS 439 FO), under the authority of VC §13953, before the customer leaves the office or the examiner leaves the customer's residence. • Fax a copy of the DS 439 FO to the local Driver Safety office immediately, or after returning to the office from an ADPE to update the driving record.

<i>Condition</i>	<i>Definition</i>	<i>Stability and Functional Impairments</i>
DIPLOPIA	Double Vision	This condition is PROGRESSIVE . Impaired functions may be: <ul style="list-style-type: none"> • Central Vision/Visual Acuity • Night Vision • Peripheral Vision • Visual Perception
<i>Action Needed</i>	<i>If...</i>	<i>Then...</i>
No Action	<ul style="list-style-type: none"> • The vision screening standard is met. 	N/A
SDPE	<ul style="list-style-type: none"> • The vision screening standard is not met. <p>NOTE: Require an SDPE if the condition exists in one or both eyes.</p>	<ul style="list-style-type: none"> • Require a DL 62. • If the SDPE is passed: <ul style="list-style-type: none"> — Issue a limited-term DL. — Consult the prognosis section of the DL 62 to determine when the customer should return to DMV. — Impose any appropriate restrictions. • If the SDPE is failed, determine if: <ul style="list-style-type: none"> — The customer may improve with more training or practice. — An ADPE may be appropriate (see ADPE below). — The customer’s driving errors are so serious that revocation is necessary (see Immediate revocation below).
ADPE	<p>The customer failed the SDPE, and the:</p> <ul style="list-style-type: none"> • Driving environment in which he/she needs to drive is less demanding than the driving test route at the DMV field office, • He/she consents to specific area restrictions 	<ul style="list-style-type: none"> • If the ADPE is passed: <ul style="list-style-type: none"> — Issue a limited-term DL — Impose any appropriate restrictions that reduce the customer’s scope of driving. • If the ADPE is failed, or the driving errors are so serious that revocation is necessary: <ul style="list-style-type: none"> — Revoke the customer’s DL (see Immediate revocation below).
Immediate Revocation	<p>The customer:</p> <ul style="list-style-type: none"> • Fails the SDPE and the ADPE is not an option • Fails the ADPE • Makes driving errors that are so serious that issuing a DL would endanger the motoring public 	<ul style="list-style-type: none"> • Issue an Order of Suspension/Revocation (DS 439 FO), under the authority of VC §13953, before the customer leaves the office or the examiner leaves the customer’s residence. • Fax a copy of the DS 439 FO to the local Driver Safety office immediately, or after returning to the office from an ADPE to update the driving record.

<i>Condition</i>	<i>Definition</i>	<i>Stability and Functional Impairments</i>
DIPLOPIA (Uncorrectable)	Double Vision: <ul style="list-style-type: none"> • From misalignment of the eyes. • May vary in degree when looking in different directions. 	This condition is GENERALLY STABLE (static) . Impaired functions may be: <ul style="list-style-type: none"> • Reduced Depth Perception • Visual Field Loss • Abnormal Eye Movements
<i>Action Needed</i>	<i>If...</i>	<i>Then...</i>
No Action	<ul style="list-style-type: none"> • The vision screening standard is met, or • The vision condition was previously identified and the department has a record of it. 	N/A
SDPE	<ul style="list-style-type: none"> • The vision screening standard is not met, or • The department does not have a record of it 	<ul style="list-style-type: none"> • Require a DL 62. • If the SDPE is passed: <ul style="list-style-type: none"> — Issue a license. — Impose any appropriate restrictions. • If the SDPE is failed, determine if: <ul style="list-style-type: none"> — The customer may improve with more training or practice. — An ADPE may be appropriate (see ADPE below). — The customer's driving errors are so serious that revocation is necessary (see Immediate Revocation below).
ADPE	The customer failed the SDPE, and the: <ul style="list-style-type: none"> • Driving environment in which he/she needs to drive is less demanding than the driving test route at the DMV field office, • He/she consents to specific area restrictions 	<ul style="list-style-type: none"> • If the ADPE is passed: <ul style="list-style-type: none"> — Issue a DL — Impose any appropriate restrictions that reduce the customer's scope of driving. <p>NOTE: Issuing a limited-term DL may be appropriate if there are valid concerns over the customer's physical condition, judgment, and/or reactions.</p> • If the ADPE is failed, or the driving errors are so serious that revocation is necessary: <ul style="list-style-type: none"> — Revoke the customer's DL (see Immediate revocation below).
Immediate Revocation	The customer: <ul style="list-style-type: none"> • Fails the SDPE and the ADPE is not an option • Fails the ADPE • Makes driving errors that are so serious that issuing a DL would endanger the motoring public. 	<ul style="list-style-type: none"> • Issue an Order of Suspension/Revocation (DS 439 FO), under the authority of VC §13953, before the customer leaves the office or the examiner leaves the customer's residence. • Fax a copy of the DS 439 FO to the local Driver Safety office immediately, or after returning to the office from an ADPE to update the driving record.

<i>Condition</i>	<i>Definition</i>	<i>Stability and Functional Impairments</i>
<p>GLAUCOMA Also see Decreased Peripheral Vision</p>	<p>Characterized by excessive pressure within the eyeball.</p> <ul style="list-style-type: none"> • Damages the optic nerve. • Treatable by eye drops and/or surgery to prevent further damage. <p>May be associated with a diabetic condition, high blood pressure, or hardening of the arteries.</p>	<p>This condition is PROGRESSIVE.</p> <p>Impaired functions may be:</p> <ul style="list-style-type: none"> • Night Vision • Glare resistance/Glare Recovery • Peripheral Vision
<i>Action Needed</i>	<i>If...</i>	<i>Then...</i>
No Action	<ul style="list-style-type: none"> • The vision screening standard is met. 	N/A
SDPE	<ul style="list-style-type: none"> • The vision screening standard is not met. 	<ul style="list-style-type: none"> • Require a DL 62. • If the SDPE is passed: <ul style="list-style-type: none"> — Issue a limited-term DL. — Consult the prognosis section of the DL 62 to determine when the customer should return to DMV. — Impose any appropriate restrictions. • If the SDPE is failed, determine if: <ul style="list-style-type: none"> — The customer may improve with more training or practice. — An ADPE may be appropriate (see ADPE below). — The customer’s driving errors are so serious that revocation is necessary (see Immediate revocation below).
ADPE	<p>The customer failed the SDPE, and the:</p> <ul style="list-style-type: none"> • Driving environment in which he/she needs to drive is less demanding than the driving test route at the DMV field office, • He/she consents to specific area restrictions 	<ul style="list-style-type: none"> • If the ADPE is passed: <ul style="list-style-type: none"> — Issue a limited-term DL — Impose any appropriate restrictions that reduce the customer’s scope of driving. • If the ADPE is failed, or the driving errors are so serious that revocation is necessary: <ul style="list-style-type: none"> — Revoke the customer’s DL (see Immediate revocation below).
Immediate Revocation	<p>The customer:</p> <ul style="list-style-type: none"> • Fails the SDPE and the ADPE is not an option • Fails the ADPE • Makes driving errors that are so serious that issuing a DL would endanger the motoring public 	<ul style="list-style-type: none"> • Issue an Order of Suspension/Revocation (DS 439 FO), under the authority of VC §13953, before the customer leaves the office or the examiner leaves the customer’s residence. • Fax a copy of the DS 439 FO to the local Driver Safety office immediately, or after returning to the office from an ADPE to update the driving record.

<i>Condition</i>	<i>Definition</i>	<i>Stability and Functional Impairments</i>
HEMIANOPSIA (Hemianopia) Also see Decreased Peripheral Vision	Loss of vision for one half of the visual field of one or both eyes A disconnection between the eye and brain. The visual image seen by the eye does not travel to the brain.	This condition is PROGRESSIVE . Impaired functions may be: <ul style="list-style-type: none"> • Central Vision/Visual Acuity • Night Vision • Peripheral Vision • Visual Perception
<i>Action Needed</i>	<i>If...</i>	<i>Then...</i>
No Action	<ul style="list-style-type: none"> • The vision screening standard is met. 	N/A
SDPE	<ul style="list-style-type: none"> • The vision screening standard is not met. NOTE: Require an SDPE if the condition exists in one or both eyes.	<ul style="list-style-type: none"> • Require a DL 62. • If the SDPE is passed: <ul style="list-style-type: none"> — Issue a limited-term DL. — Consult the prognosis section of the DL 62 to determine when the customer should return to DMV. — Impose any appropriate restrictions. • If the SDPE is failed, determine if: <ul style="list-style-type: none"> — The customer may improve with more training or practice. — An ADPE may be appropriate (see ADPE below). — The customer’s driving errors are so serious that revocation is necessary (see Immediate revocation below).
ADPE	The customer failed the SDPE, and the: <ul style="list-style-type: none"> • Driving environment in which he/she needs to drive is less demanding than the driving test route at the DMV field office, • He/she consents to specific area restrictions 	<ul style="list-style-type: none"> • If the ADPE is passed: <ul style="list-style-type: none"> — Issue a limited-term DL — Impose any appropriate restrictions that reduce the customer’s scope of driving. • If the ADPE is failed, or the driving errors are so serious that revocation is necessary: <ul style="list-style-type: none"> — Revoke the customer’s DL (see Immediate revocation below).
Immediate Revocation	The customer: <ul style="list-style-type: none"> • Fails the SDPE and the ADPE is not an option • Fails the ADPE • Makes driving errors that are so serious that issuing a DL would endanger the motoring public 	<ul style="list-style-type: none"> • Issue an Order of Suspension/Revocation (DS 439 FO), under the authority of VC §13953, before the customer leaves the office or the examiner leaves the customer’s residence. • Fax a copy of the DS 439 FO to the local Driver Safety office immediately, or after returning to the office from an ADPE to update the driving record.

<i>Condition</i>	<i>Definition</i>	<i>Stability and Functional Impairments</i>
HYPEROPIA (Hypermetropia)	<p>Farsightedness.</p> <ul style="list-style-type: none"> • There will be loss of visual acuity for near objects such as the letters on this page. • There is little or no impairment unless corrective lenses obstruct peripheral vision. 	<p>This condition is generally STABLE (static).</p> <p>Impaired functions may be:</p> <ul style="list-style-type: none"> • Central Vision/Visual Acuity • Peripheral Vision if lenses in glasses are very thick.
<i>Action Needed</i>	<i>If...</i>	<i>Then...</i>
No Action	<ul style="list-style-type: none"> • The vision screening standard is met, or • The vision condition was previously identified and the department has a record of it. 	N/A
SDPE	<ul style="list-style-type: none"> • The vision screening standard is not met, or • The department does not have a record of it 	<ul style="list-style-type: none"> • Require a DL 62. • If the SDPE is passed: <ul style="list-style-type: none"> — Issue a license. — Impose any appropriate restrictions. • If the SDPE is failed, determine if: <ul style="list-style-type: none"> — The customer may improve with more training or practice. — An ADPE may be appropriate (see ADPE below). — The customer's driving errors are so serious that revocation is necessary (see Immediate Revocation below).
ADPE	<p>The customer failed the SDPE, and the:</p> <ul style="list-style-type: none"> • Driving environment in which he/she needs to drive is less demanding than the driving test route at the DMV field office, • He/she consents to specific area restrictions 	<ul style="list-style-type: none"> • If the ADPE is passed: <ul style="list-style-type: none"> — Issue a DL — Impose any appropriate restrictions that reduce the customer's scope of driving. <p>NOTE: Issuing a limited-term DL may be appropriate if there are valid concerns over the customer's physical condition, judgment, and/or reactions.</p> • If the ADPE is failed, or the driving errors are so serious that revocation is necessary: <ul style="list-style-type: none"> — Revoke the customer's DL (see Immediate revocation below).
Immediate Revocation	<p>The customer:</p> <ul style="list-style-type: none"> • Fails the SDPE and the ADPE is not an option • Fails the ADPE • Makes driving errors that are so serious that issuing a DL would endanger the motoring public. 	<ul style="list-style-type: none"> • Issue an Order of Suspension/Revocation (DS 439 FO), under the authority of VC §13953, before the customer leaves the office or the examiner leaves the customer's residence. • Fax a copy of the DS 439 FO to the local Driver Safety office immediately, or after returning to the office from an ADPE to update the driving record.

<i>Condition</i>	<i>Definition</i>	<i>Stability and Functional Impairments</i>
KERATOCONUS	Cone-shaped deformity of the cornea.	This condition is PROGRESSIVE . Impaired functions may be: <ul style="list-style-type: none"> • Central Vision/Visual Acuity • Glare resistance/Glare Recovery • Visual Perception
<i>Action Needed</i>	<i>If...</i>	<i>Then...</i>
No Action	<ul style="list-style-type: none"> • The vision screening standard is met. 	N/A
SDPE	<ul style="list-style-type: none"> • The vision screening standard is not met. 	<ul style="list-style-type: none"> • Require a DL 62. • If the SDPE is passed: <ul style="list-style-type: none"> — Issue a limited-term DL. — Consult the prognosis section of the DL 62 to determine when the customer should return to DMV. — Impose any appropriate restrictions. • If the SDPE is failed, determine if: <ul style="list-style-type: none"> — The customer may improve with more training or practice. — An ADPE may be appropriate (see ADPE below). — The customer's driving errors are so serious that revocation is necessary (see Immediate revocation below).
ADPE	<p>The customer failed the SDPE, and the:</p> <ul style="list-style-type: none"> • Driving environment in which he/she needs to drive is less demanding than the driving test route at the DMV field office, • He/she consents to specific area restrictions 	<ul style="list-style-type: none"> • If the ADPE is passed: <ul style="list-style-type: none"> — Issue a limited-term DL — Impose any appropriate restrictions that reduce the customer's scope of driving. • If the ADPE is failed, or the driving errors are so serious that revocation is necessary: <ul style="list-style-type: none"> — Revoke the customer's DL (see Immediate revocation below).
Immediate Revocation	<p>The customer:</p> <ul style="list-style-type: none"> • Fails the SDPE and the ADPE is not an option • Fails the ADPE • Makes driving errors that are so serious that issuing a DL would endanger the motoring public 	<ul style="list-style-type: none"> • Issue an Order of Suspension/Revocation (DS 439 FO), under the authority of VC §13953, before the customer leaves the office or the examiner leaves the customer's residence. • Fax a copy of the DS 439 FO to the local Driver Safety office immediately, or after returning to the office from an ADPE to update the driving record.

<i>Condition</i>	<i>Definition</i>	<i>Stability and Functional Impairments</i>
MACULAR DEGENERATION	<p>Degeneration of the portion of the retina (macula) responsible for central vision and color perception.</p> <ul style="list-style-type: none"> • This condition is more common in older adults. • It will cause reduction in color vision, inability to see fine detail, read road signs, and identify objects. • The person will also have difficulty in judging closing speeds on approaching objects. 	<p>This condition is PROGRESSIVE.</p> <p>Impaired functions may be:</p> <ul style="list-style-type: none"> • Central Vision/Visual Acuity • Glare resistance/Glare Recovery • Night Vision • Judgment of Distance
<i>Action Needed</i>	<i>If...</i>	<i>Then...</i>
No Action	<ul style="list-style-type: none"> • The vision screening standard is met. 	N/A
SDPE	<ul style="list-style-type: none"> • The vision screening standard is not met. 	<ul style="list-style-type: none"> • Require a DL 62. • If the SDPE is passed: <ul style="list-style-type: none"> — Issue a limited-term DL. — Consult the prognosis section of the DL 62 to determine when the customer should return to DMV. — Impose any appropriate restrictions. • If the SDPE is failed, determine if: <ul style="list-style-type: none"> — The customer may improve with more training or practice. — An ADPE may be appropriate (see ADPE below). — The customer’s driving errors are so serious that revocation is necessary (see Immediate revocation below).
ADPE	<p>The customer failed the SDPE, and the:</p> <ul style="list-style-type: none"> • Driving environment in which he/she needs to drive is less demanding than the driving test route at the DMV field office, • He/she consents to specific area restrictions 	<ul style="list-style-type: none"> • If the ADPE is passed: <ul style="list-style-type: none"> — Issue a limited-term DL — Impose any appropriate restrictions that reduce the customer’s scope of driving. • If the ADPE is failed, or the driving errors are so serious that revocation is necessary: <ul style="list-style-type: none"> — Revoke the customer’s DL (see Immediate revocation below).
Immediate Revocation	<p>The customer:</p> <ul style="list-style-type: none"> • Fails the SDPE and the ADPE is not an option • Fails the ADPE • Makes driving errors that are so serious that issuing a DL would endanger the motoring public 	<ul style="list-style-type: none"> • Issue an Order of Suspension/Revocation (DS 439 FO), under the authority of VC §13953, before the customer leaves the office or the examiner leaves the customer’s residence. • Fax a copy of the DS 439 FO to the local Driver Safety office immediately, or after returning to the office from an ADPE to update the driving record.

<i>Condition</i>	<i>Definition</i>	<i>Stability and Functional Impairments</i>
MONOCULAR	Useful vision in only one eye and the other eye is blind or absent.	This condition is STABLE (static) for the unsighted eye. Impaired functions may be: <ul style="list-style-type: none"> • Reduced Depth Perception • Visual Field Loss
<i>Action Needed</i>	<i>If...</i>	<i>Then...</i>
No Action	<ul style="list-style-type: none"> • The vision screening standard is met, or • The vision condition was previously identified and the department has a record of it. 	N/A
SDPE	<ul style="list-style-type: none"> • The vision screening standard is not met, or • The department does not have a record of it <p>NOTE: The vision screening standard is not met in the sighted eye, or the customer has developed the loss of vision in one eye since his/her last DL renewal.</p>	<ul style="list-style-type: none"> • Require a DL 62. • If the SDPE is passed: <ul style="list-style-type: none"> — Issue a license. — Impose any appropriate restrictions. • If the SDPE is failed, determine if: <ul style="list-style-type: none"> — The customer may improve with more training or practice. — An ADPE may be appropriate (see ADPE below). — The customer’s driving errors are so serious that revocation is necessary (see Immediate Revocation below).
ADPE	<p>The customer failed the SDPE, and the:</p> <ul style="list-style-type: none"> • Driving environment in which he/she needs to drive is less demanding than the driving test route at the DMV field office, • He/she consents to specific area restrictions 	<ul style="list-style-type: none"> • If the ADPE is passed: <ul style="list-style-type: none"> — Issue a DL — Impose any appropriate restrictions that reduce the customer’s scope of driving. <p>NOTE: Issuing a limited-term DL may be appropriate if there are valid concerns over the customer’s physical condition, judgment, and/or reactions.</p> • If the ADPE is failed, or the driving errors are so serious that revocation is necessary: <ul style="list-style-type: none"> — Revoke the customer’s DL (see Immediate revocation below).
Immediate Revocation	<p>The customer:</p> <ul style="list-style-type: none"> • Fails the SDPE and the ADPE is not an option • Fails the ADPE • Makes driving errors that are so serious that issuing a DL would endanger the motoring public. 	<ul style="list-style-type: none"> • Issue an Order of Suspension/Revocation (DS 439 FO), under the authority of VC §13953, before the customer leaves the office or the examiner leaves the customer’s residence. • Fax a copy of the DS 439 FO to the local Driver Safety office immediately, or after returning to the office from an ADPE to update the driving record.

<i>Condition</i>	<i>Definition</i>	<i>Stability and Functional Impairments</i>
MONOVISION	<p>Monovision is one eye focused for distance vision and one eye focused for close-up vision (about 16 inches away).</p> <p>This procedure:</p> <ul style="list-style-type: none"> • Is generally attained by wearing contact lenses, surgery, or leaving one eye untreated. • Reduces or eliminates the need for corrective lenses. 	<p>This condition is GENERALLY STABLE (static).</p> <p>Reduced visual acuity in the untreated eye or the eye focused for close-up vision.</p>

<i>Action Needed</i>	<i>If...</i>	<i>Then...</i>
No Action	<ul style="list-style-type: none"> • The vision screening standard is met, or • The vision condition was previously identified and the department has a record of it. 	<p>Issue license.</p> <p>NOTE: Do not require a DL 62 or a driving test if he/she:</p> <ul style="list-style-type: none"> • Meets the 20/40 vision screening standard with his/her better eye, and • The department has a record of the condition.
SDPE	<ul style="list-style-type: none"> • The vision screening standard is not met, or • The department does not have a record of it <p>NOTE: The vision screening standard is not met in the eye treated for distance vision.</p>	<ul style="list-style-type: none"> • Require a DL 62. • If the SDPE is passed: <ul style="list-style-type: none"> — Issue a license. — Impose any appropriate restrictions. • If the SDPE is failed, determine if: <ul style="list-style-type: none"> — The customer may improve with more training or practice. — An ADPE may be appropriate (see ADPE below). — The customer’s driving errors are so serious that revocation is necessary (see Immediate Revocation below).
ADPE	<p>The customer failed the SDPE, and the:</p> <ul style="list-style-type: none"> • Driving environment in which he/she needs to drive is less demanding than the driving test route at the DMV field office, • He/she consents to specific area restrictions 	<ul style="list-style-type: none"> • If the ADPE is passed: <ul style="list-style-type: none"> — Issue a DL — Impose any appropriate restrictions that reduce the customer’s scope of driving. <p>NOTE: Issuing a limited-term DL may be appropriate if there are valid concerns over the customer’s physical condition, judgment, and/or reactions.</p> • If the ADPE is failed, or the driving errors are so serious that revocation is necessary: <ul style="list-style-type: none"> — Revoke the customer’s DL (see Immediate revocation below).
Immediate Revocation	<p>The customer:</p> <ul style="list-style-type: none"> • Fails the SDPE and the ADPE is not an option • Fails the ADPE • Makes driving errors that are so serious that issuing a DL would endanger the motoring public. 	<ul style="list-style-type: none"> • Issue an Order of Suspension/Revocation (DS 439 FO), under the authority of VC §13953, before the customer leaves the office or the examiner leaves the customer’s residence. • Fax a copy of the DS 439 FO to the local Driver Safety office immediately, or after returning to the office from an ADPE to update the driving record.

<i>Condition</i>	<i>Definition</i>	<i>Stability and Functional Impairments</i>
MYOPIA	Nearsightedness. Loss of visual acuity for distant objects, such as the letters on a sign, is experienced unless corrected.	This condition is PROGRESSIVE . Impaired functions may be: <ul style="list-style-type: none"> • Central Vision/Visual Acuity • Eye Movement • Night Vision • Visual Perception • Peripheral Vision
<i>Action Needed</i>	<i>If...</i>	<i>Then...</i>
No Action	<ul style="list-style-type: none"> • The vision screening standard is met. 	N/A
SDPE	<ul style="list-style-type: none"> • The vision screening standard is not met. 	<ul style="list-style-type: none"> • Require a DL 62. • If the SDPE is passed: <ul style="list-style-type: none"> — Issue a limited-term DL. — Consult the prognosis section of the DL 62 to determine when the customer should return to DMV. — Impose any appropriate restrictions. • If the SDPE is failed, determine if: <ul style="list-style-type: none"> — The customer may improve with more training or practice. — An ADPE may be appropriate (see ADPE below). — The customer’s driving errors are so serious that revocation is necessary (see Immediate revocation below).
ADPE	<p>The customer failed the SDPE, and the:</p> <ul style="list-style-type: none"> • Driving environment in which he/she needs to drive is less demanding than the driving test route at the DMV field office, • He/she consents to specific area restrictions 	<ul style="list-style-type: none"> • If the ADPE is passed: <ul style="list-style-type: none"> — Issue a limited-term DL — Impose any appropriate restrictions that reduce the customer’s scope of driving. • If the ADPE is failed, or the driving errors are so serious that revocation is necessary: <ul style="list-style-type: none"> — Revoke the customer’s DL (see Immediate revocation below).
Immediate Revocation	<p>The customer:</p> <ul style="list-style-type: none"> • Fails the SDPE and the ADPE is not an option • Fails the ADPE • Makes driving errors that are so serious that issuing a DL would endanger the motoring public 	<ul style="list-style-type: none"> • Issue an Order of Suspension/Revocation (DS 439 FO), under the authority of VC §13953, before the customer leaves the office or the examiner leaves the customer’s residence. • Fax a copy of the DS 439 FO to the local Driver Safety office immediately, or after returning to the office from an ADPE to update the driving record.

<i>Condition</i>	<i>Definition</i>	<i>Stability and Functional Impairments</i>
NYSTAGMUS	Repetitive involuntary eye movements.	This condition is STABLE (static) . Impaired functions may be: <ul style="list-style-type: none"> • Central Vision/Visual Acuity • Glare Resistance/Glare Recovery • Eye Movements NOTE: If the condition is severe, the person will have a tendency to look at objects from the side by turning their head.
<i>Action Needed</i>	<i>If...</i>	<i>Then...</i>
No Action	<ul style="list-style-type: none"> • The vision screening standard is met, or • The vision condition was previously identified and the department has a record of it. 	N/A
SDPE	<ul style="list-style-type: none"> • The vision screening standard is not met, or • The department does not have a record of it 	<ul style="list-style-type: none"> • Require a DL 62. • If the SDPE is passed: <ul style="list-style-type: none"> — Issue a license. — Impose any appropriate restrictions. • If the SDPE is failed, determine if: <ul style="list-style-type: none"> — The customer may improve with more training or practice. — An ADPE may be appropriate (see ADPE below). — The customer’s driving errors are so serious that revocation is necessary (see Immediate Revocation below).
ADPE	The customer failed the SDPE, and the: <ul style="list-style-type: none"> • Driving environment in which he/she needs to drive is less demanding than the driving test route at the DMV field office, • He/she consents to specific area restrictions 	<ul style="list-style-type: none"> • If the ADPE is passed: <ul style="list-style-type: none"> — Issue a DL — Impose any appropriate restrictions that reduce the customer’s scope of driving. NOTE: Issuing a limited-term DL may be appropriate if there are valid concerns over the customer’s physical condition, judgment, and/or reactions. • If the ADPE is failed, or the driving errors are so serious that revocation is necessary: <ul style="list-style-type: none"> — Revoke the customer’s DL (see Immediate revocation below).
Immediate Revocation	The customer: <ul style="list-style-type: none"> • Fails the SDPE and the ADPE is not an option • Fails the ADPE • Makes driving errors that are so serious that issuing a DL would endanger the motoring public. 	<ul style="list-style-type: none"> • Issue an Order of Suspension/Revocation (DS 439 FO), under the authority of VC §13953, before the customer leaves the office or the examiner leaves the customer’s residence. • Fax a copy of the DS 439 FO to the local Driver Safety office immediately, or after returning to the office from an ADPE to update the driving record.

<i>Condition</i>	<i>Definition</i>	<i>Stability and Functional Impairments</i>
POSTERIOR CAPSULE OPACIFICATION (Post. Caps. Opac.)	Scar tissue developing behind the intraocular lens implants which can lead to blurring of vision. This occurs in up to 25% of patients after cataract surgery and is cured by laser treatment (capsulotomy), diagnosis should no longer exist.	This condition is USUALLY PROGRESSIVE . Impaired functions may be: <ul style="list-style-type: none"> • Decreased Visual Acuity • Problems with Glare • Contrast Sensitivity Loss • Poor Night Vision
<i>Action Needed</i>	<i>If...</i>	<i>Then...</i>
No Action	<ul style="list-style-type: none"> • The vision screening standard is met. 	N/A
SDPE	<ul style="list-style-type: none"> • The vision screening standard is not met. <p>NOTE: Require an SDPE if the condition exists in one or both eyes.</p>	<ul style="list-style-type: none"> • Require a DL 62. • If the SDPE is passed: <ul style="list-style-type: none"> — Issue a limited-term DL. — Consult the prognosis section of the DL 62 to determine when the customer should return to DMV. — Impose any appropriate restrictions. • If the SDPE is failed, determine if: <ul style="list-style-type: none"> — The customer may improve with more training or practice. — An ADPE may be appropriate (see ADPE below). — The customer’s driving errors are so serious that revocation is necessary (see Immediate revocation below).
ADPE	<p>The customer failed the SDPE, and the:</p> <ul style="list-style-type: none"> • Driving environment in which he/she needs to drive is less demanding than the driving test route at the DMV field office, • He/she consents to specific area restrictions 	<ul style="list-style-type: none"> • If the ADPE is passed: <ul style="list-style-type: none"> — Issue a limited-term DL — Impose any appropriate restrictions that reduce the customer’s scope of driving. • If the ADPE is failed, or the driving errors are so serious that revocation is necessary: <ul style="list-style-type: none"> — Revoke the customer’s DL (see Immediate revocation below).
Immediate Revocation	<p>The customer:</p> <ul style="list-style-type: none"> • Fails the SDPE and the ADPE is not an option • Fails the ADPE • Makes driving errors that are so serious that issuing a DL would endanger the motoring public 	<ul style="list-style-type: none"> • Issue an Order of Suspension/Revocation (DS 439 FO), under the authority of VC §13953, before the customer leaves the office or the examiner leaves the customer’s residence. • Fax a copy of the DS 439 FO to the local Driver Safety office immediately, or after returning to the office from an ADPE to update the driving record.

<i>Condition</i>	<i>Definition</i>	<i>Stability and Functional Impairments</i>
PSEUDOPHAKIA Also see Cataract.	Replacement of the natural lens with a plastic lens called an Intra-Ocular Lens (IOL). Primarily used as a treatment for cataract removal.	This condition is STABLE (static) . Impaired functions may be: <ul style="list-style-type: none"> • Central Vision/Visual Acuity • Glare Resistance/Glare Recovery • Judgment of Distance • Peripheral Vision • Eye Movements
<i>Action Needed</i>	<i>If...</i>	<i>Then...</i>
No Action	<ul style="list-style-type: none"> • The vision screening standard is met, or • The vision condition was previously identified and the department has a record of it. 	N/A
SDPE	<ul style="list-style-type: none"> • The vision screening standard is not met, or • The department does not have a record of it 	<ul style="list-style-type: none"> • Require a DL 62. • If the SDPE is passed: <ul style="list-style-type: none"> — Issue a license. — Impose any appropriate restrictions. • If the SDPE is failed, determine if: <ul style="list-style-type: none"> — The customer may improve with more training or practice. — An ADPE may be appropriate (see ADPE below). — The customer’s driving errors are so serious that revocation is necessary (see Immediate Revocation below).
ADPE	<p>The customer failed the SDPE, and the:</p> <ul style="list-style-type: none"> • Driving environment in which he/she needs to drive is less demanding than the driving test route at the DMV field office, • He/she consents to specific area restrictions 	<ul style="list-style-type: none"> • If the ADPE is passed: <ul style="list-style-type: none"> — Issue a DL — Impose any appropriate restrictions that reduce the customer’s scope of driving. NOTE: Issuing a limited-term DL may be appropriate if there are valid concerns over the customer’s physical condition, judgment, and/or reactions. • If the ADPE is failed, or the driving errors are so serious that revocation is necessary: <ul style="list-style-type: none"> — Revoke the customer’s DL (see Immediate revocation below).
Immediate Revocation	<p>The customer:</p> <ul style="list-style-type: none"> • Fails the SDPE and the ADPE is not an option • Fails the ADPE • Makes driving errors that are so serious that issuing a DL would endanger the motoring public. 	<ul style="list-style-type: none"> • Issue an Order of Suspension/Revocation (DS 439 FO), under the authority of VC §13953, before the customer leaves the office or the examiner leaves the customer’s residence. • Fax a copy of the DS 439 FO to the local Driver Safety office immediately, or after returning to the office from an ADPE to update the driving record.

<i>Condition</i>	<i>Definition</i>	<i>Stability and Functional Impairments</i>
QUADRANTANOPIA	<p>Loss of corresponding quadrants of the visual field in both eyes, i.e. right lower quadrant in the right and left eyes, usually due to brain injury from a stroke, tumor, or surgery.</p> <p>The quadrant affected will determine the visual limitation while driving, i.e., right lower quadrant would not allow sight of cars or pedestrians to the right or in the right hand mirror, without the driver turning to the right.</p>	<p>This condition is POSSIBLY STABLE (static).</p> <p>Impaired functions may be:</p> <ul style="list-style-type: none"> • Visual Field Loss • Possible Reduced Depth Perception

<i>Action Needed</i>	<i>If...</i>	<i>Then...</i>
No Action	<ul style="list-style-type: none"> • The vision screening standard is met, or • The vision condition was previously identified and the department has a record of it. 	<p>Issue license.</p> <p>NOTE: Do not require a DL 62 or a driving test if he/she:</p> <ul style="list-style-type: none"> • Meets the 20/40 vision screening standard with his/her better eye, and • The department has a record of the condition.
SDPE	<ul style="list-style-type: none"> • The vision screening standard is not met, or • The department does not have a record of it <p>NOTE: Drive test examiners should use additional caution during the SDPE when the customer's field of view is less than 100°.</p>	<ul style="list-style-type: none"> • Require a DL 62. • If the SDPE is passed: <ul style="list-style-type: none"> — Issue a license. — Impose any appropriate restrictions. • If the SDPE is failed, determine if: <ul style="list-style-type: none"> — The customer may improve with more training or practice. — An ADPE may be appropriate (see ADPE below). — The customer's driving errors are so serious that revocation is necessary (see Immediate Revocation below).
ADPE	<p>The customer failed the SDPE, and the:</p> <ul style="list-style-type: none"> • Driving environment in which he/she needs to drive is less demanding than the driving test route at the DMV field office, • He/she consents to specific area restrictions 	<ul style="list-style-type: none"> • If the ADPE is passed: <ul style="list-style-type: none"> — Issue a DL — Impose any appropriate restrictions that reduce the customer's scope of driving. <p>NOTE: Issuing a limited-term DL may be appropriate if there are valid concerns over the customer's physical condition, judgment, and/or reactions.</p> • If the ADPE is failed, or the driving errors are so serious that revocation is necessary: <ul style="list-style-type: none"> — Revoke the customer's DL (see Immediate revocation below).
Immediate Revocation	<p>The customer:</p> <ul style="list-style-type: none"> • Fails the SDPE and the ADPE is not an option • Fails the ADPE • Makes driving errors that are so serious that issuing a DL would endanger the motoring public. 	<ul style="list-style-type: none"> • Issue an Order of Suspension/Revocation (DS 439 FO), under the authority of VC §13953, before the customer leaves the office or the examiner leaves the customer's residence. • Fax a copy of the DS 439 FO to the local Driver Safety office immediately, or after returning to the office from an ADPE to update the driving record.

<i>Condition</i>	<i>Definition</i>	<i>Stability and Functional Impairments</i>
RETINAL DAMAGE	<p>Areas of vision loss from bleeding, swelling, or scarring of the retina associated with inflammation, blood vessel damage, or laser treatment.</p> <p>The damage is usually permanent and is associated with loss of portions of the visual field.</p>	<p>This condition is PROGRESSIVE.</p> <p>Impaired functions may be:</p> <ul style="list-style-type: none"> • Visual Field Defect • Decreased Acuity • Contrast Sensitivity Loss • Poor Night Vision • Color Defect
<i>Action Needed</i>	<i>If...</i>	<i>Then...</i>
No Action	<ul style="list-style-type: none"> • The vision screening standard is met. 	N/A
SDPE	<ul style="list-style-type: none"> • The vision screening standard is not met. <p>NOTE: Require an SDPE if the condition exists in one or both eyes.</p>	<ul style="list-style-type: none"> • Require a DL 62. • If the SDPE is passed: <ul style="list-style-type: none"> — Issue a limited-term DL. — Consult the prognosis section of the DL 62 to determine when the customer should return to DMV. — Impose any appropriate restrictions. • If the SDPE is failed, determine if: <ul style="list-style-type: none"> — The customer may improve with more training or practice. — An ADPE may be appropriate (see ADPE below). — The customer’s driving errors are so serious that revocation is necessary (see Immediate revocation below).
ADPE	<p>The customer failed the SDPE, and the:</p> <ul style="list-style-type: none"> • Driving environment in which he/she needs to drive is less demanding than the driving test route at the DMV field office, • He/she consents to specific area restrictions 	<ul style="list-style-type: none"> • If the ADPE is passed: <ul style="list-style-type: none"> — Issue a limited-term DL — Impose any appropriate restrictions that reduce the customer’s scope of driving. • If the ADPE is failed, or the driving errors are so serious that revocation is necessary: <ul style="list-style-type: none"> — Revoke the customer’s DL (see Immediate revocation below).
Immediate Revocation	<p>The customer:</p> <ul style="list-style-type: none"> • Fails the SDPE and the ADPE is not an option • Fails the ADPE • Makes driving errors that are so serious that issuing a DL would endanger the motoring public 	<ul style="list-style-type: none"> • Issue an Order of Suspension/Revocation (DS 439 FO), under the authority of VC §13953, before the customer leaves the office or the examiner leaves the customer’s residence. • Fax a copy of the DS 439 FO to the local Driver Safety office immediately, or after returning to the office from an ADPE to update the driving record.

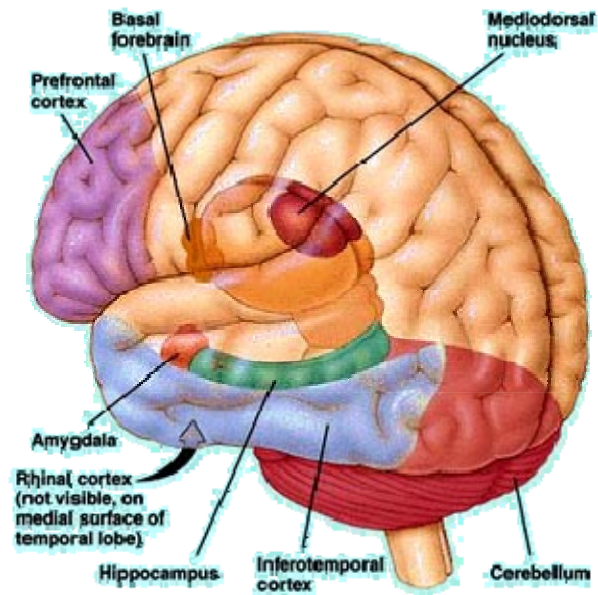
<i>Condition</i>	<i>Definition</i>	<i>Stability and Functional Impairments</i>
RETINAL DETACHMENT	<p>Small holes or tears in the retina which can lead to retinal detachment.</p> <ul style="list-style-type: none"> • Portion(s) of the retina lift away from the wall of the eye. • Detachment tears and holes can usually be repaired. • This condition may be associated with a diabetic condition or eye injury. 	<p>This condition is PROGRESSIVE.</p> <p>Impaired functions may be:</p> <ul style="list-style-type: none"> • Central Vision/Visual Acuity • Night Vision • Glare Resistance/Glare Recovery • Judgment of Distance • Peripheral Vision
<i>Action Needed</i>	<i>If...</i>	<i>Then...</i>
No Action	<ul style="list-style-type: none"> • The vision screening standard is met. 	N/A
SDPE	<ul style="list-style-type: none"> • The vision screening standard is not met. 	<ul style="list-style-type: none"> • Require a DL 62. • If the SDPE is passed: <ul style="list-style-type: none"> — Issue a limited-term DL. — Consult the prognosis section of the DL 62 to determine when the customer should return to DMV. — Impose any appropriate restrictions. • If the SDPE is failed, determine if: <ul style="list-style-type: none"> — The customer may improve with more training or practice. — An ADPE may be appropriate (see ADPE below). — The customer’s driving errors are so serious that revocation is necessary (see Immediate revocation below).
ADPE	<p>The customer failed the SDPE, and the:</p> <ul style="list-style-type: none"> • Driving environment in which he/she needs to drive is less demanding than the driving test route at the DMV field office, • He/she consents to specific area restrictions 	<ul style="list-style-type: none"> • If the ADPE is passed: <ul style="list-style-type: none"> — Issue a limited-term DL — Impose any appropriate restrictions that reduce the customer’s scope of driving. • If the ADPE is failed, or the driving errors are so serious that revocation is necessary: <ul style="list-style-type: none"> — Revoke the customer’s DL (see Immediate revocation below).
Immediate Revocation	<p>The customer:</p> <ul style="list-style-type: none"> • Fails the SDPE and the ADPE is not an option • Fails the ADPE • Makes driving errors that are so serious that issuing a DL would endanger the motoring public 	<ul style="list-style-type: none"> • Issue an Order of Suspension/Revocation (DS 439 FO), under the authority of VC §13953, before the customer leaves the office or the examiner leaves the customer’s residence. • Fax a copy of the DS 439 FO to the local Driver Safety office immediately, or after returning to the office from an ADPE to update the driving record.

<i>Condition</i>	<i>Definition</i>	<i>Stability and Functional Impairments</i>
RETINITIS PIGMENTOSA	Degeneration of the retina. It almost always affects both eyes.	This condition is PROGRESSIVE . Impaired functions may be: <ul style="list-style-type: none"> • Central Vision/Visual Acuity • Night Vision • Glare Resistance/Glare Recovery • Judgment of Distance • Peripheral Vision
<i>Action Needed</i>	<i>If...</i>	<i>Then...</i>
No Action	<ul style="list-style-type: none"> • The vision screening standard is met. 	N/A
SDPE	<ul style="list-style-type: none"> • The vision screening standard is not met. 	<ul style="list-style-type: none"> • Require a DL 62. • If the SDPE is passed: <ul style="list-style-type: none"> — Issue a limited-term DL. — Consult the prognosis section of the DL 62 to determine when the customer should return to DMV. — Impose any appropriate restrictions. • If the SDPE is failed, determine if: <ul style="list-style-type: none"> — The customer may improve with more training or practice. — An ADPE may be appropriate (see ADPE below). — The customer’s driving errors are so serious that revocation is necessary (see Immediate revocation below).
ADPE	<p>The customer failed the SDPE, and the:</p> <ul style="list-style-type: none"> • Driving environment in which he/she needs to drive is less demanding than the driving test route at the DMV field office, • He/she consents to specific area restrictions 	<ul style="list-style-type: none"> • If the ADPE is passed: <ul style="list-style-type: none"> — Issue a limited-term DL — Impose any appropriate restrictions that reduce the customer’s scope of driving. • If the ADPE is failed, or the driving errors are so serious that revocation is necessary: <ul style="list-style-type: none"> — Revoke the customer’s DL (see Immediate revocation below).
Immediate Revocation	<p>The customer:</p> <ul style="list-style-type: none"> • Fails the SDPE and the ADPE is not an option • Fails the ADPE • Makes driving errors that are so serious that issuing a DL would endanger the motoring public 	<ul style="list-style-type: none"> • Issue an Order of Suspension/Revocation (DS 439 FO), under the authority of VC §13953, before the customer leaves the office or the examiner leaves the customer’s residence. • Fax a copy of the DS 439 FO to the local Driver Safety office immediately, or after returning to the office from an ADPE to update the driving record.

<i>Condition</i>	<i>Definition</i>	<i>Stability and Functional Impairments</i>
STRABISMUS (Crossed Eyes) Also see Amblyopia and Diplopia.	Misalignment of the eyes.	This condition is STABLE (static) . Impaired functions may be: <ul style="list-style-type: none"> • Central Vision/Visual Acuity • Judgment of Distance
<i>Action Needed</i>	<i>If...</i>	<i>Then...</i>
No Action	<ul style="list-style-type: none"> • The vision screening standard is met, or • The vision condition was previously identified and the department has a record of it. 	N/A
SDPE	<ul style="list-style-type: none"> • The vision screening standard is not met, or • The department does not have a record of it 	<ul style="list-style-type: none"> • Require a DL 62. • If the SDPE is passed: <ul style="list-style-type: none"> — Issue a license. — Impose any appropriate restrictions. • If the SDPE is failed, determine if: <ul style="list-style-type: none"> — The customer may improve with more training or practice. — An ADPE may be appropriate (see ADPE below). — The customer’s driving errors are so serious that revocation is necessary (see Immediate Revocation below).
ADPE	<p>The customer failed the SDPE, and the:</p> <ul style="list-style-type: none"> • Driving environment in which he/she needs to drive is less demanding than the driving test route at the DMV field office, • He/she consents to specific area restrictions 	<ul style="list-style-type: none"> • If the ADPE is passed: <ul style="list-style-type: none"> — Issue a DL — Impose any appropriate restrictions that reduce the customer’s scope of driving. <p>NOTE: Issuing a limited-term DL may be appropriate if there are valid concerns over the customer’s physical condition, judgment, and/or reactions.</p> • If the ADPE is failed, or the driving errors are so serious that revocation is necessary: <ul style="list-style-type: none"> — Revoke the customer’s DL (see Immediate revocation below).
Immediate Revocation	<p>The customer:</p> <ul style="list-style-type: none"> • Fails the SDPE and the ADPE is not an option • Fails the ADPE • Makes driving errors that are so serious that issuing a DL would endanger the motoring public. 	<ul style="list-style-type: none"> • Issue an Order of Suspension/Revocation (DS 439 FO), under the authority of VC §13953, before the customer leaves the office or the examiner leaves the customer’s residence. • Fax a copy of the DS 439 FO to the local Driver Safety office immediately, or after returning to the office from an ADPE to update the driving record.

<i>Condition</i>	<i>Definition</i>	<i>Stability and Functional Impairments</i>
VISUAL FIELD LOSS	<p>Loss of portion of the visual field from damaging to the eye or brain, resulting from a wide variety of diseases or disorders.</p> <p>There could be other visual problems depending on the diagnosis.</p>	<p>This condition is Progressive.</p> <p>Impaired functions may be:</p> <ul style="list-style-type: none"> • Visual Field Loss • Other functions may be impaired depending on the underlying disease process.
<i>Action Needed</i>	<i>If...</i>	<i>Then...</i>
No Action	<ul style="list-style-type: none"> • The vision screening standard is met. 	N/A
SDPE	<ul style="list-style-type: none"> • The vision screening standard is not met. • Require an SDPE if there is any visual field loss. <p>NOTE: When the field of view is less than 100°, driving examiners should use additional caution during the SDPE.</p>	<ul style="list-style-type: none"> • Require a DL 62. • If the SDPE is passed: <ul style="list-style-type: none"> — Issue a limited-term DL. — Consult the prognosis section of the DL 62 to determine when the customer should return to DMV. — Impose any appropriate restrictions. • If the SDPE is failed, determine if: <ul style="list-style-type: none"> — The customer may improve with more training or practice. — An ADPE may be appropriate (see ADPE below). — The customer’s driving errors are so serious that revocation is necessary (see Immediate revocation below).
ADPE	<p>The customer failed the SDPE, and the:</p> <ul style="list-style-type: none"> • Driving environment in which he/she needs to drive is less demanding than the driving test route at the DMV field office, • He/she consents to specific area restrictions 	<ul style="list-style-type: none"> • If the ADPE is passed: <ul style="list-style-type: none"> — Issue a limited-term DL — Impose any appropriate restrictions that reduce the customer’s scope of driving. • If the ADPE is failed, or the driving errors are so serious that revocation is necessary: <ul style="list-style-type: none"> — Revoke the customer’s DL (see Immediate revocation below).
Immediate Revocation	<p>The customer:</p> <ul style="list-style-type: none"> • Fails the SDPE and the ADPE is not an option • Fails the ADPE • Makes driving errors that are so serious that issuing a DL would endanger the motoring public 	<ul style="list-style-type: none"> • Issue an Order of Suspension/Revocation (DS 439 FO), under the authority of VC §13953, before the customer leaves the office or the examiner leaves the customer’s residence. • Fax a copy of the DS 439 FO to the local Driver Safety office immediately, or after returning to the office from an ADPE to update the driving record.

MCAV



MEDICAL CONDITIONS AFFECTING VISION



DEPARTMENT OF MOTOR VEHICLES
Administrative Services Division
Departmental Training Branch
08/2014



<i>Condition</i>	<i>Definition</i>	<i>Stability and Functional Impairments</i>
<p>BRAIN TUMOR OR LESION causing vision disorders.</p> <p>Also see Head Trauma and Hemianopia.</p>	<p>A tumor may be in the brain or skull. It may be primary tumor or part of another tumor.</p> <p>A brain lesion refers to a portion of the brain that has been damaged. The tumor or lesion may cause:</p> <ul style="list-style-type: none"> • Swelling. • Inflammation of the optic nerve. • Inflammation of the visual center of the brain. <p>Any of these disturbances may result in a disruption of the processing of visual information.</p>	<p>This condition is Progressive.</p> <p>It may cause a lack of awareness of visual stimuli on one side of the visual field (special neglect)</p> <p>Impaired functions may be:</p> <ul style="list-style-type: none"> • Central Vision/Visual Acuity • Night Vision • Judgment of Distance • Peripheral Vision • Eye Movements • Visual Perception

<i>Action Needed</i>
<ul style="list-style-type: none"> • Always refer to Driver Safety.

<i>Condition</i>	<i>Definition</i>	<i>Stability and Functional Impairments</i>
CEREBRAL PALSY	Paralysis resulting from developmental defects in the brain or brain trauma at birth.	<p>This condition is Progressive.</p> <p>Impaired functions may be:</p> <ul style="list-style-type: none"> • Central Vision/Visual Acuity • Judgment of Distance • Peripheral Vision • Eye Movements • Night Vision • Visual Perception • Glare Resistance/Glare Recovery

<i>Action Needed</i>
<ul style="list-style-type: none"> • Refer to Driver Safety unless the customer was previously approved and the department has a record of his/her condition.

<i>Condition</i>	<i>Definition</i>	<i>Stability and Functional Impairments</i>
COLOR VISION DEFICIENCY	A hereditary condition that produces a reduced ability to distinguish certain shades of color.	This condition is Stable (static) . This condition frequently involves red and green colors. In rare cases, all colors are perceived as gray (monochromacy). Color deficiency is largely inconsequential unless visual acuity is involved.

<i>Action Needed</i>
<ul style="list-style-type: none"> • Do not refer to Driver Safety. • Require a driving test for: <ul style="list-style-type: none"> — An original commercial DL. — A non-commercial Class A (trailer) DL. — A firefighter-restricted DL.

<i>Condition</i>	<i>Definition</i>	<i>Stability and Functional Impairments</i>
HEAD TRAUMA Also see Hemianopsia and Brain Tumor.	Focusing difficulties and multiple vision conditions are caused by injuries to the head.	This condition is Progressive . Impaired functions may be: <ul style="list-style-type: none"> • Central Vision/Visual Acuity • Judgment of Distance • Peripheral Vision • Eye Movements • Visual Perception

<i>Action Needed</i>
<ul style="list-style-type: none"> • Always refer to Driver Safety.

<i>Condition</i>	<i>Definition</i>	<i>Stability and Functional Impairments</i>
MULTIPLE SCLEROSIS	Inflammatory disease of the Central Nervous System. Can cause nystagmus, diplopia, and/or optic nerve damage.	<p>This condition is Progressive.</p> <p>Impaired functions may be:</p> <ul style="list-style-type: none"> • Central Vision/Visual Acuity • Visual Perception • Night Vision • Judgment of Distance • Peripheral Vision • Eye Movements • Glare Resistance/Glare Recovery <p>NOTE: Fatigue and/or heat may affect stamina which reduces the ability to drive safely. The condition may be worse in the afternoon due to fatigue.</p>

<i>Action Needed</i>
<ul style="list-style-type: none"> • Always refer to Driver Safety.

<i>Condition</i>	<i>Definition</i>	<i>Stability and Functional Impairments</i>
STROKE	Bleeding into the brain caused by a rupture or occlusion of an artery which lead to sudden loss of consciousness followed by paralysis.	<p>This condition is Progressive.</p> <p>Impaired functions may be:</p> <ul style="list-style-type: none"> • Central Vision/Visual Acuity • Visual Perception • Night Vision • Judgment of Distance • Peripheral Vision • Eye Movements • Glare Resistance/Glare Recovery

<i>Action Needed</i>
<ul style="list-style-type: none"> • Always refer to Driver Safety.

